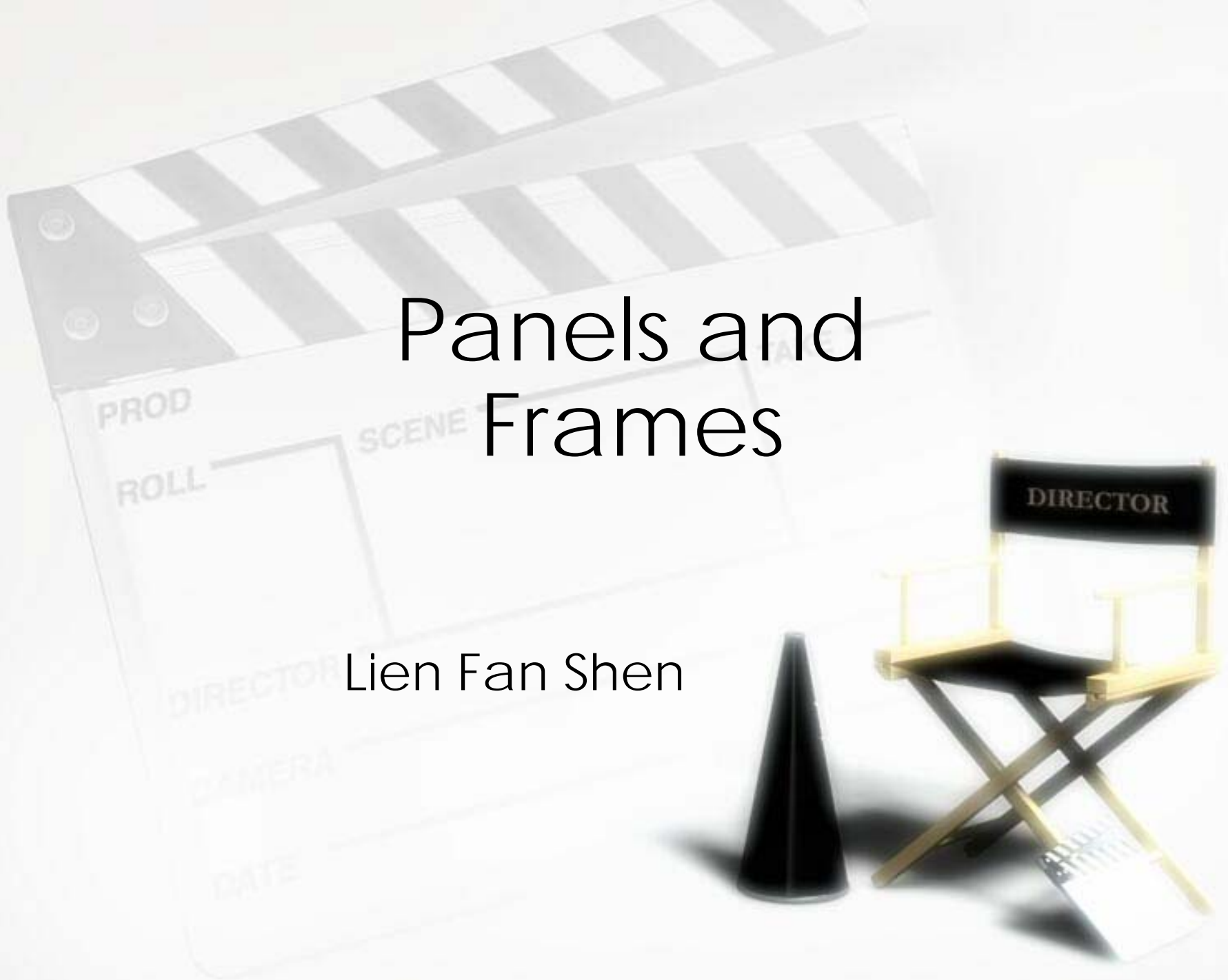


Panels and Frames

Lien Fan Shen



- » Clarity. (to communicate!)
- » Persuade. (to make your audience stay!)



1 Establish the Page Layout



Establish the page layout (determine the placement of the panel frames and add speech balloons in order to develop the story).

2 Pencil in the Under drawing



Use pencil(s) to sketch the under drawing. (HB, B, and 2B leads are about a sufficient hardness. Leads that are either too soft or too hard will be difficult for you to erase.)

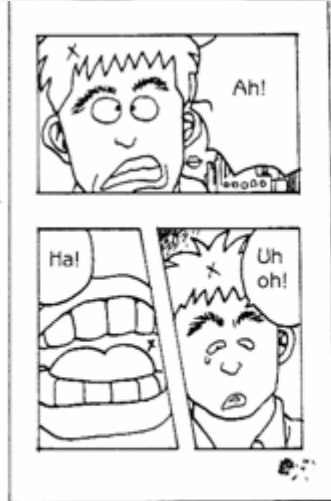
3 Ink the Figures



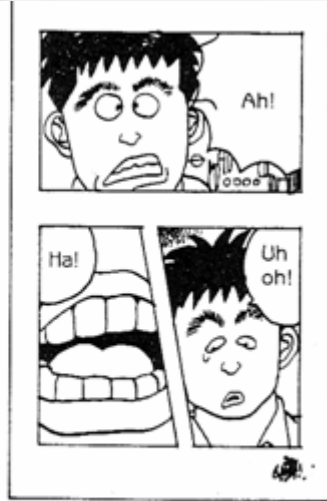
Trace over in ink those pencil lines best placed. Do not use slow, overly cautious lines when tracing. Be decisive and bold when inking.

4 Add in the Background





Don't erase the dialogue!



Add solid black areas of ink for the hair or any other area that should be totally black.

7) Erase as Needed



I cleaned up the smudge using white poster paint.

Clean up lines extending beyond the panel borders or

8) Lay Down the Screen Tone, and'





Your five choices

- » Choice of moment
- » Choice of frame
- » Choice of image
- » Choice of word
- » Choice of flow





Panel to Panel Transitions

- » Moment to moment
- » Action to action
- » Subject to subject
- » Scene to scene
- » Aspect to aspect
- » Non-sequitur



The View

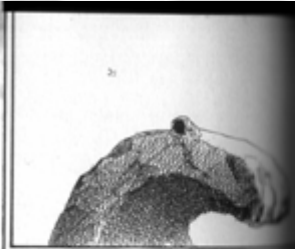
- » How much you want to show?
- » 1. Extreme long shot
- » 2. Long Shot
- » 3. Medium Shot
- » 4. Close-Up
- » 5. Extreme Close-Up

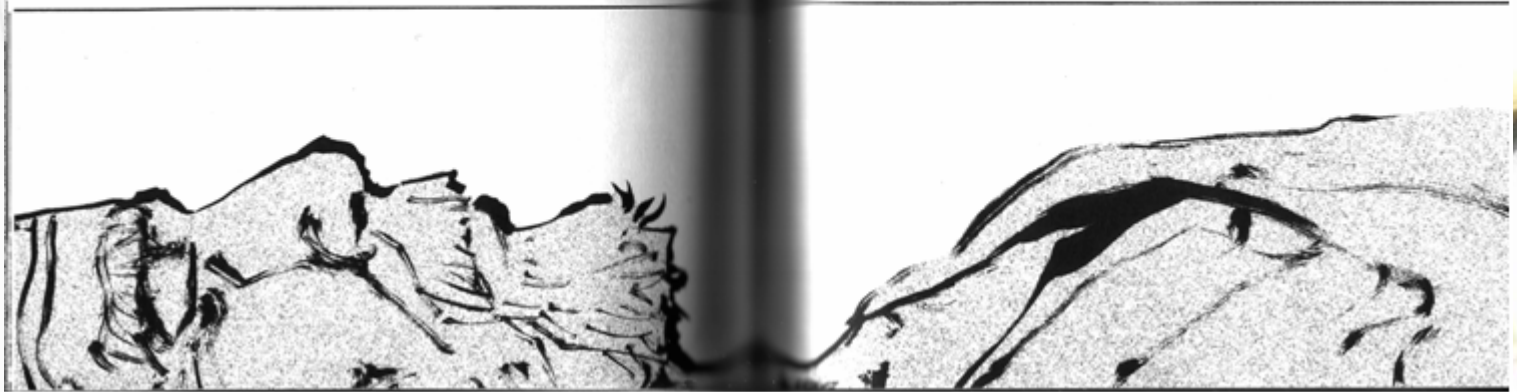


The angles (eye level)

- » Worm's eye view (low-angle camera)
- » Rising above it all (high-angle camera)









啊啊！



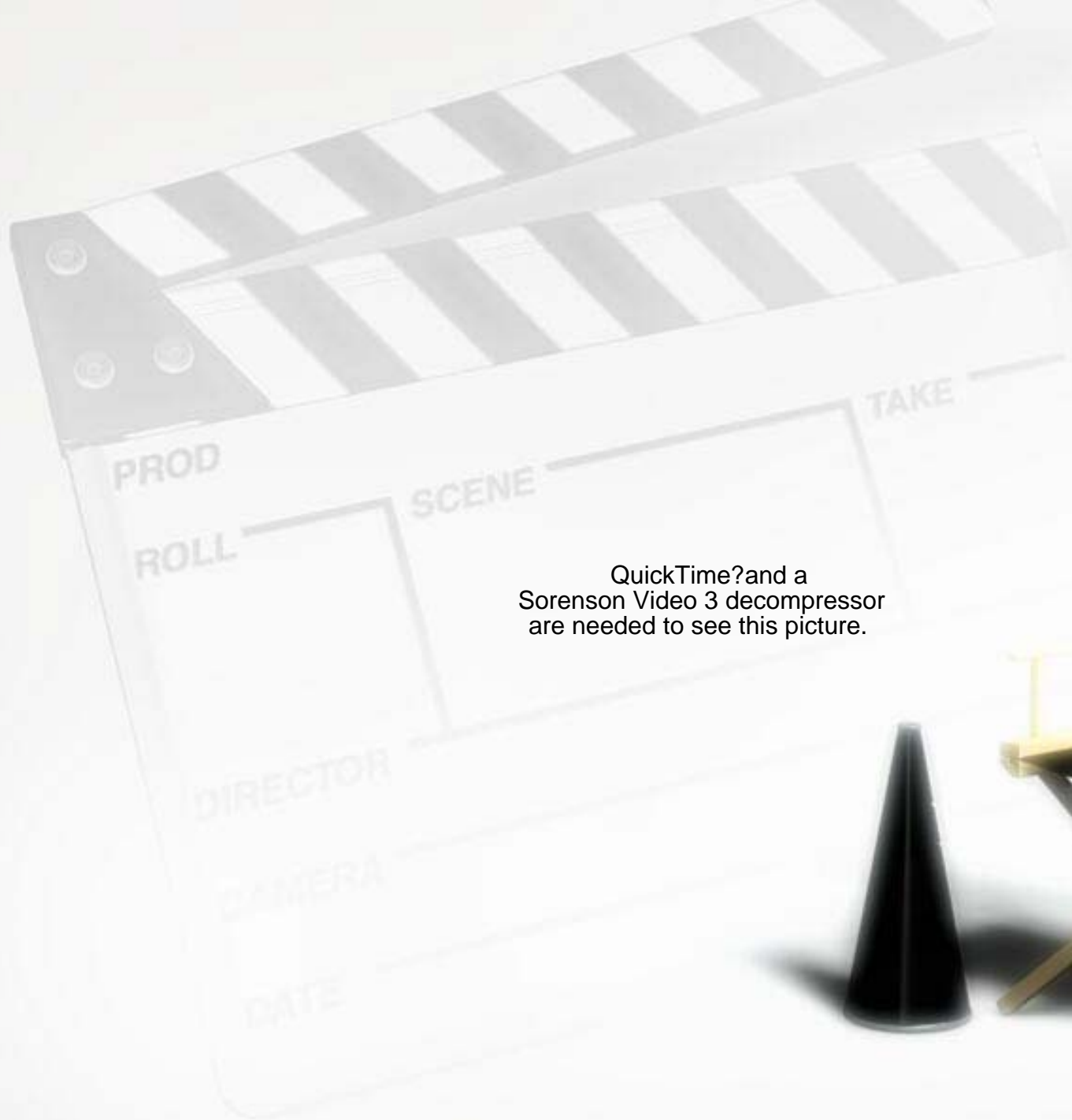
這個人是山。



A clapperboard is positioned in the upper left, tilted diagonally. It features a black and white striped top bar and fields for 'PROD', 'ROLL', 'SCENE', 'TAKE', and 'DATE'. A director's chair with a black seat and backrest and a gold frame is on the right. The backrest has the word 'DIRECTOR' written on it. A black cone sits on the floor in front of the chair. The background is a light, neutral color.

Practice of choice of moment

Pick up 16 key moments
from the following clip
and draw them out



QuickTime?and a
Sorenson Video 3 decompressor
are needed to see this picture.



In-class practice 02

- » Everyone draws one page of three different layouts for the following story.
- » After finishing three layouts, each group pick up three most interesting layout design and show them to the class.



In-class practice 02

- » A man is walking.
- » He finds a key on the ground.
- » He takes it with him; then he comes to a locked door.
- » He unlocks the doors.
- » Inside the door, something mystified him.

